

INDIRECT WASTE CONNECTIONS

For the Prevention of Backflow

What is required?

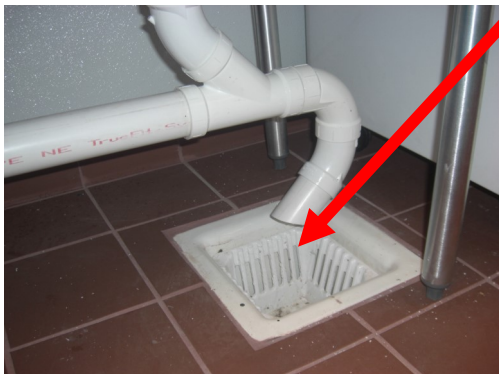
Montana's new Food Rule prohibits a direct connection to exist between the sewage system and any drain originating from equipment in which food, portable equipment or utensils are placed.

Where is it required?

New, remodeled and existing food establishments are required to have an **Air Gap** to prevent backflow of waste water into food prep sinks, three-compartment sinks, and any other equipment into which food or food equipment is placed. The air gap must be visible and located upstream from a grease trap.

What does one look like?

An **Air Gap** and an **Air Break**, two types of indirect waste connections, are shown below.



**AIR
GAP**

